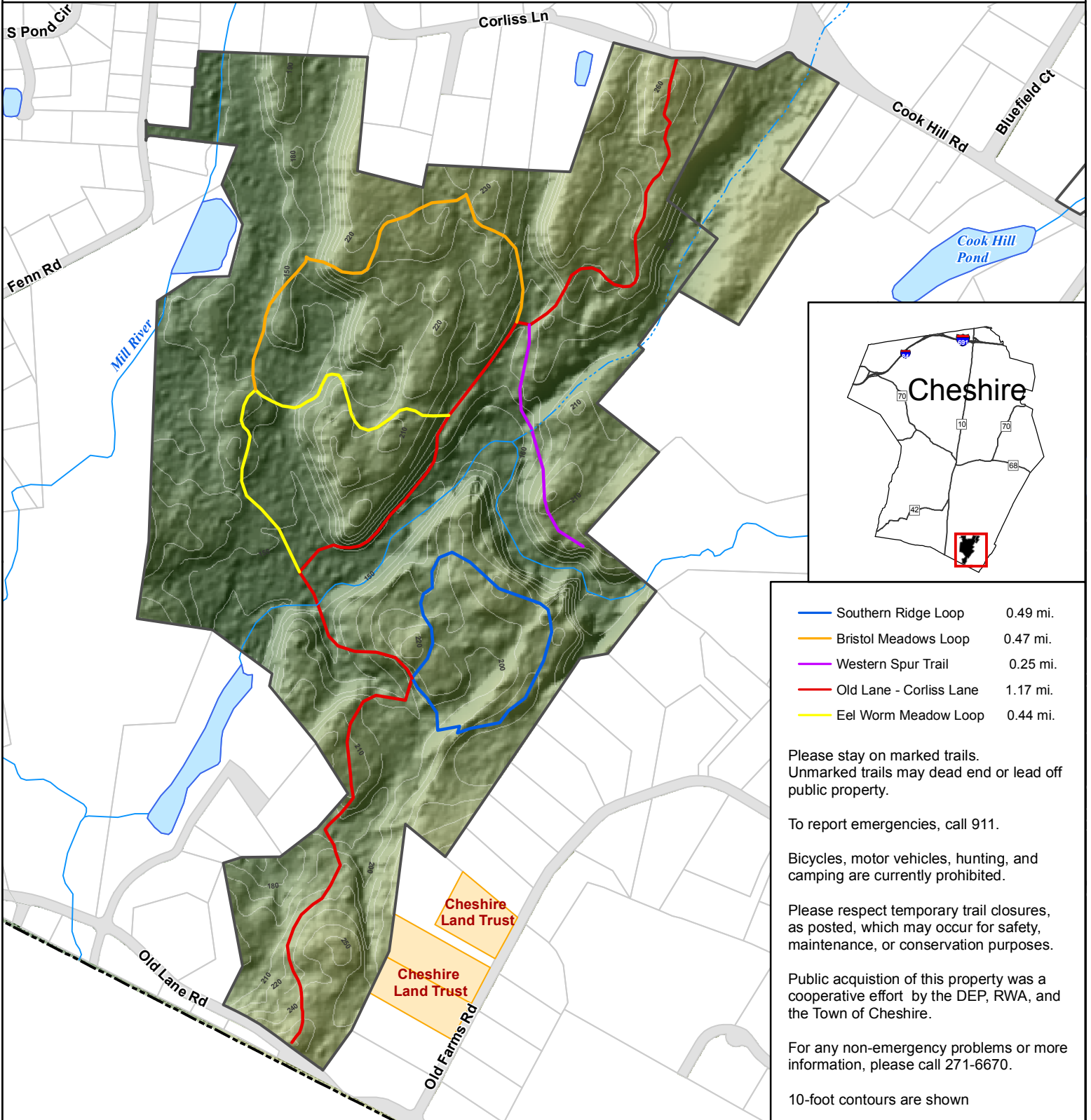


# DeDominicis Property Cheshire, Connecticut



	Southern Ridge Loop	0.49 mi.
	Bristol Meadows Loop	0.47 mi.
	Western Spur Trail	0.25 mi.
	Old Lane - Corliss Lane	1.17 mi.
	Eel Worm Meadow Loop	0.44 mi.

Please stay on marked trails. Unmarked trails may dead end or lead off public property.

To report emergencies, call 911.

Bicycles, motor vehicles, hunting, and camping are currently prohibited.

Please respect temporary trail closures, as posted, which may occur for safety, maintenance, or conservation purposes.

Public acquisition of this property was a cooperative effort by the DEP, RWA, and the Town of Cheshire.

For any non-emergency problems or more information, please call 271-6670.

10-foot contours are shown

Source: "Roads", c 1984-2009 Tele Atlas, Rel. 02/09  
 "Town Boundary", DEP  
 "Parcels", New England Geosystems 2009  
 "Trails, Contours", Town of Cheshire

For general planning purposes only. Delineations may not be exact.  
 April 2010

